

Master of Human Capital Leadership



SINGAPORE MANAGEMENT
UNIVERSITY

Where people strategy drives business strategy

MASTERS



Valentin Lorenzo Posadas
General Manager, APAC
Arctic Shores
Class of 2017

LEE KONG CHIAN
SCHOOL OF BUSINESS

Why SMU Master of Human Capital Leadership (MHCL)?



1 For effective thinkers and problem solvers

Gain experience in solving human capital challenges with the aid of analytics and evidence-based approaches, and also be equipped with the knowledge and skills to address complex human capital challenges concerning culture, structures, leadership, and talent.

2 Where education works

Gain real-world experience with internship* opportunities through our network of 3,000 companies worldwide.

**Applicable to full-time students only*

3 World-class faculty

Benefit from the combined experience and expertise of eminent faculty with PhD from Cornell, Harvard, INSEAD, Oxford, Stanford, Yale and other universities. All as you gain valuable insights from thought leaders in the industry.

4 Expand your horizons

Enrich your education with global exposure from a one-week residency at an eminent institute of education for human capital management and site visits to companies in the US.

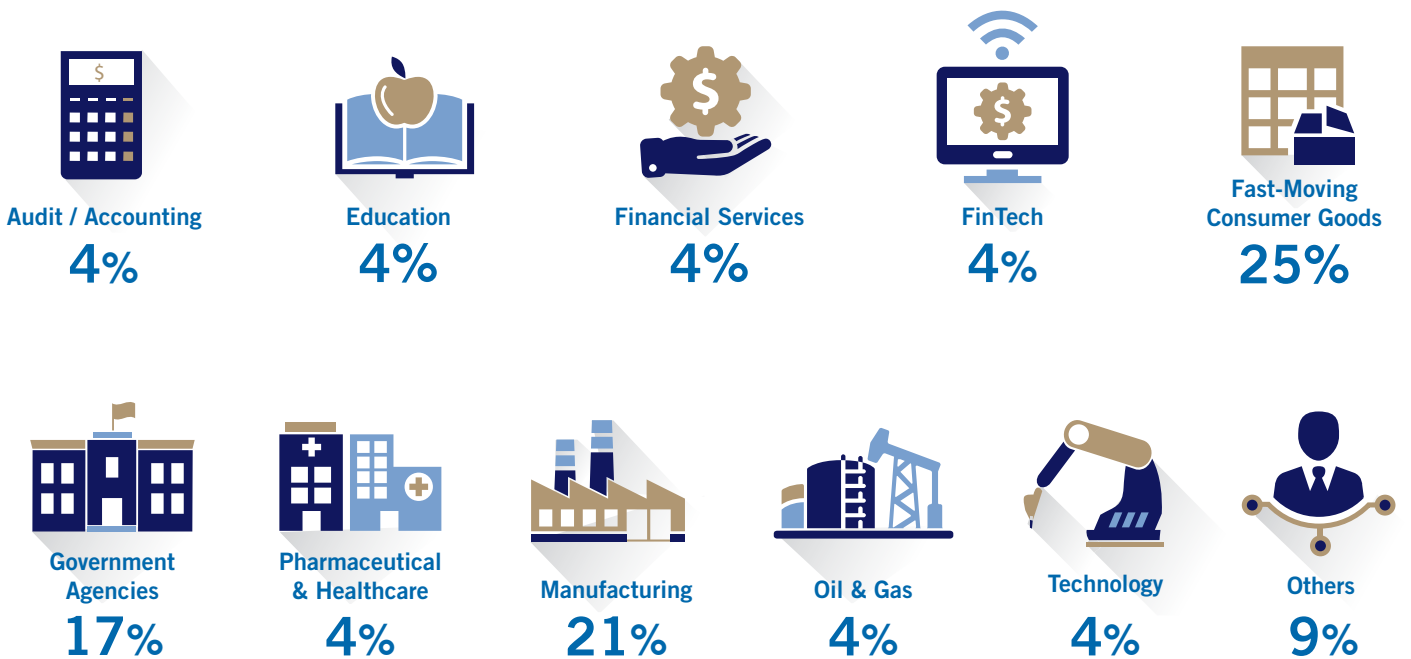
Unity in Diversity

Discover where your degree can take you, and the profile of great minds you could be networking with.

Class Profile



Industries MHCL Graduates Work in



“ As talent management has become a top priority for senior leaders, the programme taught me how to be more strategic in implementing HR initiatives and what HR best practices to apply for a local or global environment.

Valentin Lorenzo Posadas,
Class of 2017
General Manager, APAC, Arctic Shores

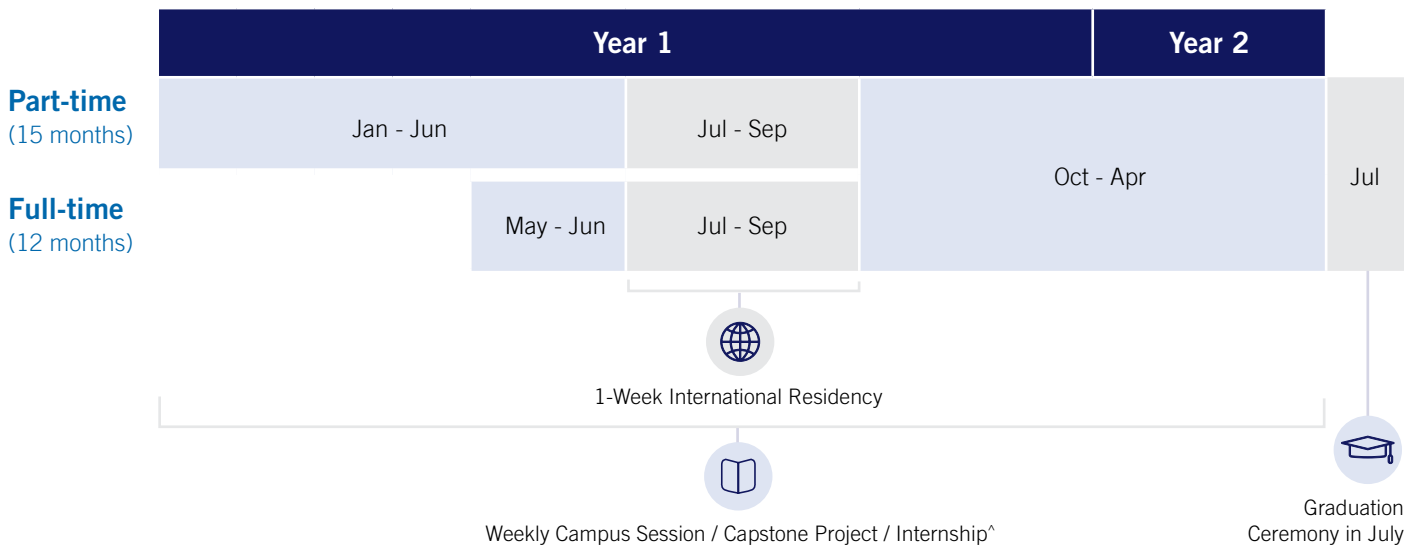


“ It is exactly the “stepping out of comfort zone” experience that shook me at first but gradually becomes part of the norm. [The] MHCL programme...is designed to equip HR leaders to talk business and not HR. We are required to think big picture and connect the dots.

Ang Ging Yin, Class of 2017
Talent and Organisation Consulting Manager,
Southeast Asia, Abbott

Programme Calendar

Designed for flexibility, the MHCL programme is available in both full-time (12 months) and part-time (15 months) formats.



^For full-time students only

Admission and Application

- Good undergraduate degree
- Minimum working experience (post-Bachelor's degree) of 3 years (part-time track) or 2 years (full-time track)
- Good score in GMAT/GRE or SMU Admissions Test*
- 2 reference letters
- A TOEFL/IELTS score of less than 2 years is required if the medium of your undergraduate studies was not in English

* SMU undergraduate alumni with cumulative GPAs of 3.0 or better can use their undergraduate GPAs in place of the SMU admissions test.

The part-time track of the MHCL programme is open to all Singaporeans and Singapore Permanent Residents (PR). It is also open to international students who hold a valid Employment Pass or Dependant's Pass, and do not require a student visa. International students without a valid Employment Pass or Dependant's Pass must possess a valid Student Pass to be able to study at SMU. SMU will assist in the application of student passes for all international students coming to SMU.

Fees

Application Fee	Registration Fee	Tuition Fee
S\$100 (inclusive of GST)	<ul style="list-style-type: none"> • Singaporeans and PRs: S\$400 (inclusive of GST) • International Applicants: S\$500 (inclusive of GST) <p><i>Amount payable upon acceptance to the programme</i></p>	S\$46,010 (inclusive of GST)

All fees are non-refundable and non-transferable. 10% of the tuition fee (the Deposit) would be required upon acceptance of offer into the programme. The remaining tuition fees would be payable over 3 equal instalments, over the duration of the programme. The tuition fee does not include meals, air travel, travel insurance, living and accommodation expenses incurred for the overseas exchange. Singapore Management University reserves the right to alter tuition and other fees as deemed appropriate.

SMU alumni will be entitled to a 10% discount off the tuition fee. 7% GST of the discounted tuition fee will apply.

Scholarships

Partial scholarships for the Master of Human Capital Leadership (MHCL) programme entail award amounts ranging between 10% to 20% of the tuition fee, with no bonds attached. 7% GST will still apply for the full tuition fee before the scholarship award.

All candidates are automatically submitted for consideration for Academic Excellence scholarships upon meeting our scholarship criteria.

The scholarship categories include:

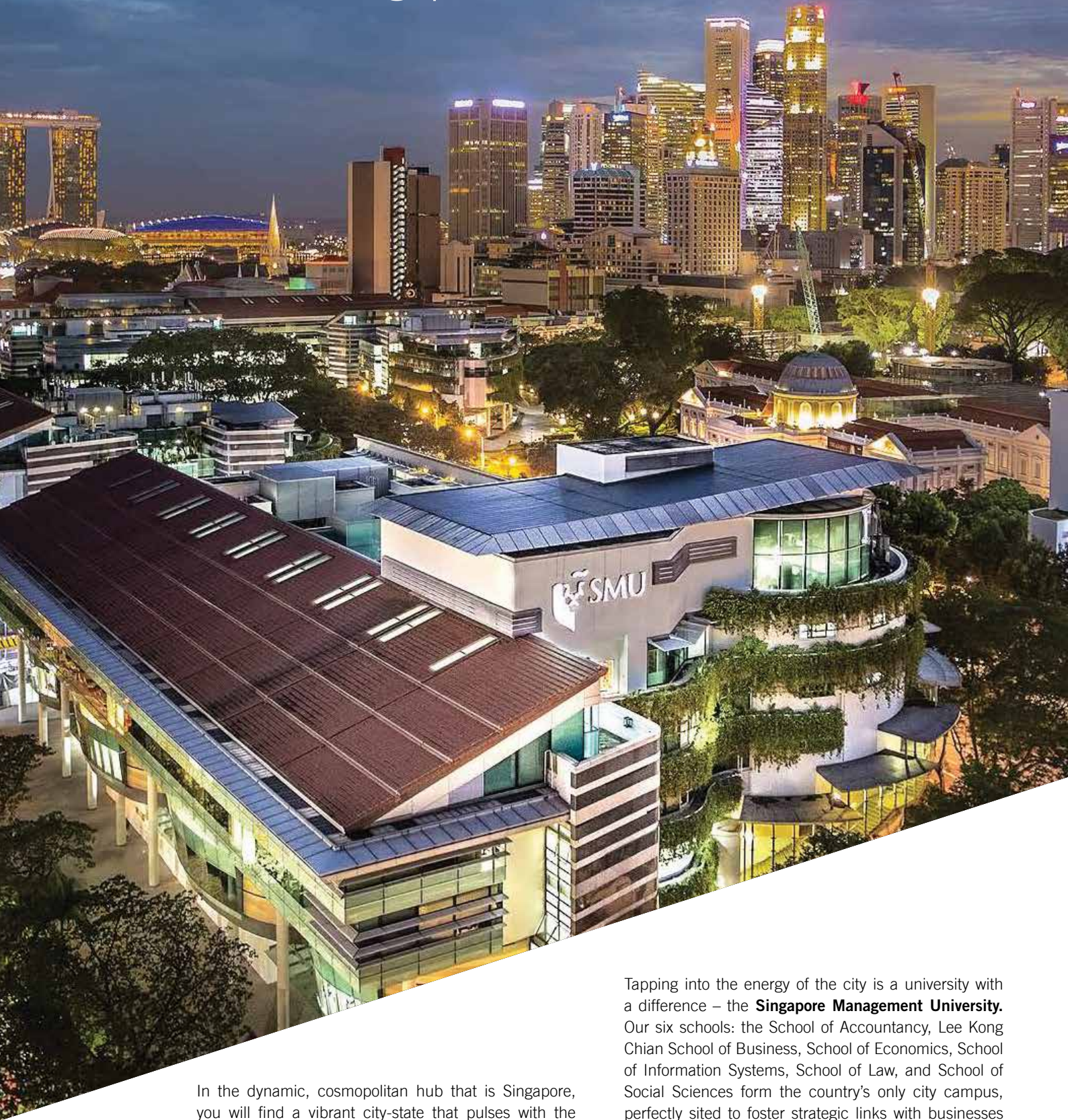
Academic Excellence | Global Awareness | Leadership | Women in Business

Programme Information

Full-Time (FT) Intake (May)		Part-Time (PT) Intake (Jan)	
		Term 1	Finance*
			Human Capital & Global Business Strategy
		Term 2	Human Capital Analytics & Research for Management Insights
			Strategic Management*
Term 1	Finance*	Term 3	Leading, Managing & Developing People
	Human Capital & Global Business Strategy		
	Marketing Management*		Marketing Management*
	Leading, Managing & Developing People		
Term 2	Accounting*	Term 4	Accounting*
	Human Capital Analytics & Research for Management Insights		
	Negotiating in a HR Context		Negotiating in a HR Context
	Strategic Management*		
1-week Overseas Segment (Jul or Oct)			
Term 3 (FT) Term 5 (PT)	Learning & Talent Development	Capstone Project AND Internship (For FT students only)	
	Strategic Rewards Management		
Term 4 (FT) Term 6 (PT)	Evidence Based Approach to Talent Management		
	Managing Corporate Reputation & Communication		

*Blended learning foundation modules comprising mostly of online sessions and a few face-to-face sessions. Schedule is subject to change.

SMU – Right in the Heart of Asia's Hub, Singapore



In the dynamic, cosmopolitan hub that is Singapore, you will find a vibrant city-state that pulses with the diversity of both East and West. Situated at the cross-roads of the world, Singapore is home to multinational companies and thousands of small and medium-sized enterprises flourishing in a smart city renowned for its business excellence and connectivity. With its strong infrastructure, political stability and respect for intellectual property rights, this City in a Garden offers you unique opportunities to develop as a global citizen.

Tapping into the energy of the city is a university with a difference – the **Singapore Management University**. Our six schools: the School of Accountancy, Lee Kong Chian School of Business, School of Economics, School of Information Systems, School of Law, and School of Social Sciences form the country's only city campus, perfectly sited to foster strategic links with businesses and the community.

SMU generates leading-edge research with global impact and produces broad-based, creative and entrepreneurial leaders for a knowledge-based economy. Discover a multi-faceted lifestyle right here at SMU, in the heart of Singapore.

About the Lee Kong Chian School of Business

SMU commenced its curriculum in 2000 with the School of Business, which welcomed its pioneer cohort of students in August 2000. In 2004, the Lee Foundation contributed S\$50 million to SMU in honour of the late Dr Lee Kong Chian, a well-known Southeast Asian businessman, philanthropist and community leader. In recognition of the Lee Foundation's generosity, SMU named in perpetuity the School of Business, the building and the university-wide scholars programme after Dr Lee Kong Chian.

Today, the Lee Kong Chian School of Business is a dynamic Asian business school with more than 4,000 students and over a hundred full-time faculty members with doctorate degrees from renowned universities such as Cornell, Harvard, INSEAD, London Business School, Wharton, Oxford, Stanford and Yale. The school offers undergraduate, master's and doctoral programmes and is affiliated with a number of research centres such as the Sim Kee Boon Institute for Financial Economics, the Centre for Marketing Excellence and the Institute for Innovation and Entrepreneurship.



School Rankings

- 1st Triple Accredited Business School in Singapore (AACSB, AMBA, EQUIS)
- Ranked 6th Business School in Asia-Pacific (2018 Financial Times Asia-Pacific Business School Rankings)
- Ranked 2nd in Asia and 33rd worldwide (University of Texas Dallas rankings 2019)
- Ranked 22nd for Executive MBA, 43rd for MBA, 3rd for MSc in Wealth Management, and 45th in MSc in Applied Finance by the Financial Times Business School Rankings

The SMU Masters Advantage



Global Recognition

SMU is globally recognised as one of the best specialised universities in Asia and the world. Its research rankings, programme rankings, accreditations and professional recognition are testaments to its achievements and standing.



Interactive Pedagogy

SMU's interactive, seminar-style pedagogy brings you stimulating, multidisciplinary learning under the mentorship of the thought leaders and subject experts who make up our faculty. You will hone your analytical skills, teamwork and communication skills.



Innovative Curriculum

Stay relevant with courses that combine cutting-edge research and up-to-date knowledge with best business practices. SMU's Professional Development Series and award-winning Asian case studies help you approach topics from different practical perspectives for greater insights.



Networking and Career Opportunities

SMU has a diverse student population from many different countries, bringing equally diverse personal and professional experience into your network. Take advantage of comprehensive guidance from our dedicated career services to aid your career transition or advancement.



City Campus

SMU is nestled within the arts and heritage precinct, right next to the Central Business District, with unrivalled connectivity for public transport and multiple amenities around campus. Discover how life beyond the classroom is as enriching as within.

For a full listing of SMU Masters programmes, visit www.smu.edu.sg/masters.



**Lee Kong Chian School of Business
Postgraduate Admissions**

Singapore Management University
Lee Kong Chian School of Business
50 Stamford Road
Singapore 178899

(65) 6828 0882
mhcl@smu.edu.sg

  SMULKCSB



 SMULKCSB

smu.edu.sg/mhcl